

JOY HOFFMAN

PRINCE GEORGE

NOV. 10-12, 2023

RINGETTE  
TOURNAMENT

MEMORIAL

SPORTPG  
Hosting Grant

Supported by

PRINCE  
GEORGE  
TOURISM



CITY OF  
PRINCE GEORGE

PRINCE GEORGE  
Ringette

# JOY HOFFMAN

*A special person and a true friend  
to all whose life she touched.*

*December 16, 1938 – July 6, 1992*

Joy's motto:

**"I wouldn't do anything  
unless I could give it  
my very best"**



Welcome to the Joy Hoffman Memorial Tournament. This special event pays tribute to Joy Hoffman, a dedicated individual who made remarkable contributions to the sport of ringette in BC, especially in the north. Joy's passion for ringette led her to organize the local ringette league and actively support the sport for an impressive 15 years. She was involved at the local and provincial levels and played a pivotal role in founding the Northern BC Ringette League in 1985.

In honour of Joy's commitment to ringette, the inaugural Joy Hoffman Tournament was established in November, 1990. It evolved into the Joy Hoffman Memorial Tournament in the fall of 1992, ensuring that her legacy lives on.

This tournament is a celebration of her enduring  
influence on the sport and a testament to  
the profound impact one individual  
can have on a community.



# TEAM MANAGER and COACH PACKAGE

Check out the [Joy Hoffman Memorial Tournament](#) website page

- A) Trusport Principals
- B) **Channel the Flannel and Plaid Team Staff Game**
- C) Hotels offering tournament team rates
- D) Sponsoring Eateries
- E) Skate Sharpening and other ringette needs
- F) Community Activity Info
- G) Emergency Plan Information for PG Arenas

The Schedule for Club and Zone games will be available on the Team Snap Tournament App.



The tournament is primarily at the Kin Centre Arenas  
2181 Ospika Boulevard, Prince George BC  
(located adjacent to CN Centre Arena)

NOTE: Some games are at Kopar (888 Dominon St) and Elkcentre (4833 Heather Rd) – please check the schedule to confirm location of each game

The Prince George Ringette Association  
welcome teams, players, coaches, team staff,  
officials and families to Prince George and look  
forward to hosting an exciting tournament.

If you have any questions please contact our tournament chair, Jen Erickson

email: [tournament@pgringette.ca](mailto:tournament@pgringette.ca)

phone: (250) 617-8085

The Joy Hoffman Memorial Tournament believes in the [True Sport Principles](#).

They help us build the sport we want!

## **TRUE SPORT**

### **Go For It**

Rise to the challenge – always strive for excellence.  
Be persistent and discover how good you can be.

### **Play Fair**

Understand, respect, and follow the rules.  
Play with integrity – competition is only meaningful when it is fair.

### **Respect Others**

Show respect for everyone involved in creating your  
sporting experience, both on and off the field of play.  
Win with dignity and lose with grace.

### **Keep It Fun**

Find the joy in sport and share it with others.  
Remember what you love about sport and why you play.

### **Stay Healthy**

Always respect and care for your mind and body.  
Advocate for the health and safety of yourself and those around you.

### **Include Everyone**

Recognize and celebrate strength in diversity.  
Invite and welcome others into sport.

### **Give Back**

Say thanks and show gratitude.  
Encourage your sport group to make a difference in the community.

Truesport.ca

Please ensure all team staff, players, parents and spectators follow the BC ringette Codes of Conduct

[ringettebc.ca/the-office/codes-of-conduct/](https://ringettebc.ca/the-office/codes-of-conduct/)



# **CHANNEL THE FLANNEL AND PLAID GAMES**

**SATURDAY NOVEMBER 11TH**

**4:00-5:30PM KIN 1**

**We would like to welcome all teams, team staff, officials, parents, and volunteers to the Channel the Flannel and Plaid game.**

**Wear anything and everything flannel or plaid!**

**Create some awesome posters to show off your team and association and to cheer on your coaches and team staff!!**

3:45- 4:00pm Mascot Fun and Teams find their seats in their section (look for name of your ringette association)

4:00- 4:05pm Welcome to the teams!  
Welcome to the Smithers Ringette Association!

4:05- 4:15pm Association/Team Cheer/Song Chorus

4:15- 4:35pm FUN 1 Mini Game (cross ice)

4:35- 4:45pm Association/Team Cheer/Song Chorus

4:45- 5:30pm Coach/Team Staff Game

Team Staff, please let us know if you are interested in playing in the Team Staff game by going to the following form [\*\*Joy Hoffman- Team Staff Game Signup\*\*](#). *Please Note: Players must be 18+ and registered (Ringette BC General Sport Rules Policy). For junior coaches, if you wish to be involved, please consider assisting with FUN 1 mini game.*

As a team (or individuals) please arrive at Kin 1 and look for the signage indicating where each association should sit. Please take your seats by 4:00pm.

Team Staff that are playing, please use changerooms #2 and 4.

FUN 1 players should use changerooms #5 and 3.

# TOURNAMENT HOTELS



## Prestige Treasure Cove

2 Queen Beds **\$137.95**

[www.prestigehotelsandresorts.com/locations/prince-george/overview/](http://www.prestigehotelsandresorts.com/locations/prince-george/overview/)  
250-614-9111



## Courtyard by Marriott

1 King **\$189** or 2 Queen Beds **\$199**

[www.marriott.com/en-us/hotels/yxscy-courtyard-prince-george/overview/](http://www.marriott.com/en-us/hotels/yxscy-courtyard-prince-george/overview/)  
250-596-6274



## Pomeroy Inn & Suites

2 Queen Beds with mini-fridge & microwave **\$189**

1 King with mini fridge & microwave **\$179**

2 Queen Beds with fully equipped kitchen **\$199**

[www.pomeroyinnandsuites.com/prince-george/](http://www.pomeroyinnandsuites.com/prince-george/)  
236-423-4546



## Four Points by Sheraton

2 Queen beds **\$119**

[www.marriott.com/en-us/hotels/yxspf-four-points-prince-george/overview/](http://www.marriott.com/en-us/hotels/yxspf-four-points-prince-george/overview/)  
250-534-7100

# SPONSOR EATERIES

We encourage you to support the businesses who support our tournament.



## Tim Hortons

4114 15th Ave  
3055 Massey Dr  
612 East Central St E



## McDonalds

3310 15th Ave  
3250 Massey Dr



## Mr Mikes

2216 Ferry Avenue  
[mrmikes.ca/locations/prince-george-bc/](http://mrmikes.ca/locations/prince-george-bc/)  
Phone: 250-562-1080



## The Bistro at Northern Lights Estate Winery

745 Prince George Pulpmill Rd  
[northernlightswinery.ca/bistro](http://northernlightswinery.ca/bistro)  
250-564-1112



## Chopped Leaf

633 Central Street West  
[www.choppedleaf.ca/location/prince-george/](http://www.choppedleaf.ca/location/prince-george/)  
(250) 612-9249

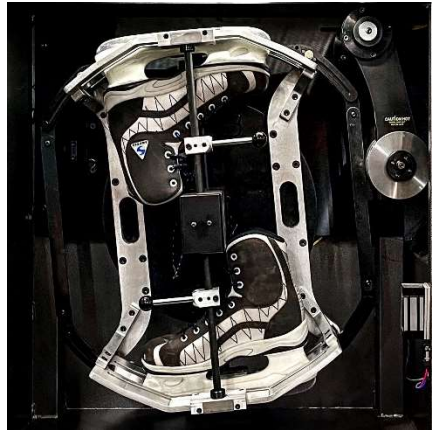


## Carl's Jr.

2333 Westwood Dr  
(250) 563-0942



# SKATE SHARPENING & EQUIPMENT NEEDS



Sprague Skate Shack  
1727 Nicholson Street South  
Mobile Truck (778) 349-3849

AP Athletics and Pro Shop  
1655 Nicholson St S  
(250) 981-4150



Sport Chek  
Pine Centre Mall  
152- 3117 Massey Dr  
(250) 561-3002

Evolve Sports  
2299 Westwood Dr  
(250) 564-6002

**Evolve**  
**SPORT & CYCLE**



# THINGS TO DO AROUND PRINCE GEORGE



## Prince George Cougars vs. Red Deer Rebels

WHL Hockey Game  
Fri, November 10th 7:00 p.m.  
CN Centre, 2187 Ospika Blvd S  
[www.eventticketscenter.com](http://www.eventticketscenter.com)

The **Prince George Cougars** are happy to welcome all ringette players to the 2023 Joy Hoffman Memorial Tournament. We would like to offer all tournament attendees and their families a **discounted rate to see the Cougars take on the Red Deer Rebels on Friday, November 10th at 7:00pm**. The Cougars have just been ranked #3 in the entire Canadian Hockey League and currently have three players out of the top 5 in WHL scoring. Purchasing your discounted tickets is a very simple online process:

- Head to [TICKETSNORTH.CA](http://TICKETSNORTH.CA) and select "PG Cougars Hockey"
- Select "Single Game Tickets"
- On the left side of the screen there is a text bar labelled "Enter Promo Code". Please type in: JOYHOFFMAN
- Select your seats for the November 10th game vs Red Deer



## Game Changerz VR

Virtual Reality Games  
1437 Commercial Crescent Suite 100  
(250) 614-1500  
[www.gamechangerzvr.ca](http://www.gamechangerzvr.ca)



## EXIT Escape Rooms

385 Victoria St  
(236) 423-2100  
[www.e-exit.ca/prince-george/](http://www.e-exit.ca/prince-george/)



## Strike Zone

10 pin Bowling & Indoor Mini Golf  
2366 Westwood Dr  
(250) 563-2695



## PG Aquatic Centre

Wave Pool, Lazy River, Diving Boards, walking distance from arena  
1770 George Paul Lane  
250-561-7787  
[www.princegeorge.ca/parks-recreation/aquatics](http://www.princegeorge.ca/parks-recreation/aquatics)



## Canfor Leisure Pool

Waterslide, Ninja Course, private room bookings  
670 Quebec St  
[www.princegeorge.ca/parks-recreation/aquatics](http://www.princegeorge.ca/parks-recreation/aquatics)  
250-561-7636



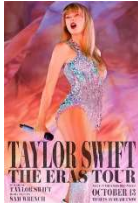
## Northern Baseball Training

HitTrax Indoor Batting Cages  
2222 Nicholson Street South  
Booking: [northernbaseballtraining.com/cage-rentals](http://northernbaseballtraining.com/cage-rentals)



## Northern Swing Indoor Golf Sim

Lounge with golf simulator for group bookings  
102-2626 Vance Rd  
844-454-2566



## Cineplex Famous Player 6 Theatre

Movie Theatre with Arcade  
172-1600 15th Avenue,  
[cineplex.com/theatre/famous-players-6-cinemas](http://cineplex.com/theatre/famous-players-6-cinemas)



## Pine Centre Shopping Mall

Shopping, Groceries, Sportchek, Foodcourt  
3055 Massey Drive  
Prince George, BC V2N 2S9  
[pinecentre.com](http://pinecentre.com)



## Conversations in Six

Contemporary Dance Performance  
Fri, November 10th 7:30 p.m.  
PG Playhouse, 2626 Recplace Drive PG, BC V2N 2S9  
Tickets: [eventbrite.ca](http://eventbrite.ca)



## Rumours: Fleetwood Mac Tribute Band

Live Music Concert  
Saturday, November 11th 8pm  
PG Playhouse 2626 Recplace Drive PG BC V2N2S9  
Tickets: [ticketsnorth.ca](http://ticketsnorth.ca)

## EMERGENCY ACTION PLAN



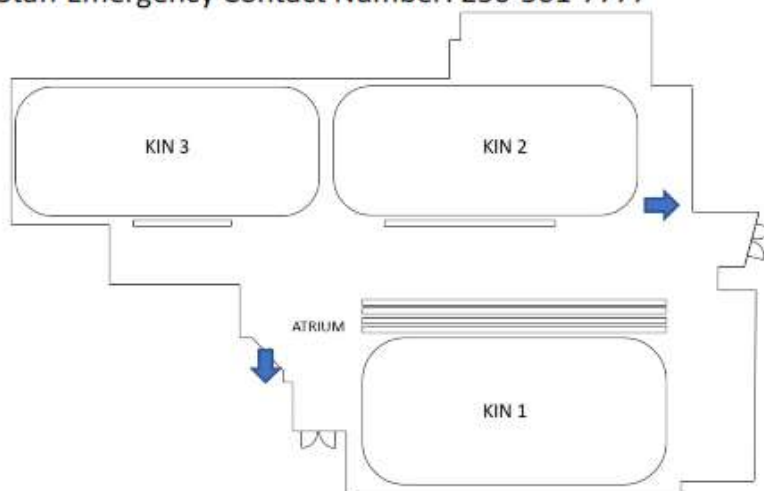
### KIN CENTRE ARENAS

**KIN 1, KIN 2, KIN 3**

2187 Ospika Boulevard  
Prince George, BC V2N 6Z1

Staff Emergency Contact Number: 250-561-7777

- ↓ Exits
- + First Aid
- ♥ Defibrillator



**Nearest Hospital:** University Hospital of Northern British Columbia  
1475 Edmonton St, Prince George, BC V2M 1S2  
(250) 565-2000  
Emergency department: Open 24 hours

**Directions to Hospital:** Head east on Keller St toward Ospika Blvd S (280 m)  
Turn left onto Ospika Blvd S (600 m)  
Turn right at the 2<sup>nd</sup> cross street onto 15<sup>th</sup> Avenue (2.2 km)  
Turn left onto Edmonton St (94 m)  
Turn left to Hospital (52 m)

**Optional Walk in Clinics:** Nechako Medical Clinic, 1600-15<sup>th</sup> Ave, PG BC V2L 3X3 (in Parkwood Pl)  
*for minor injuries* (250) 563-3399  
Real Canadian Superstore Clinic, 2155 Ferry Ave, PG BC V2N 5E8  
(250) 960-1327

ROLES		
Designate:	Designate:	Designate:
<b>CHARGE PERSON</b> <ul style="list-style-type: none"> <li>Most qualified person available with training in first aid and emergency response</li> <li>Familiarize yourself with arena emergency equipment</li> <li>Take control of emergency situation until medical personnel arrive</li> <li>Assess injury status of player</li> </ul>	<b>CALL PERSON</b> <ul style="list-style-type: none"> <li>Makes call when emergency assistance required (tests their cell phone in the facility to ensure it will work)</li> <li>Know location of alternate phones in the facility being played in – have change or a phone card if necessary</li> <li>Ideally attend all games and not involved on the bench</li> <li>Has a diagram displaying specific directions and best route to the arena facility</li> </ul>	<b>CONTROL PERSON</b> <ul style="list-style-type: none"> <li>Pre-determine the location of the AED and other emergency equipment in the facility</li> <li>Retrieving the AED and/or first aid kit and bringing to the injured player if requested</li> <li>Seek highly-trained medical personnel in the facility if requested by the charge person</li> <li>Ensure teammates, other participants and spectators are not in the way of the charge person</li> <li>Advise opponents, on-ice officials, arena staff and parents of the steps being taken</li> <li>Ensure the quickest and best route for the ambulance crew to the ice surface is clear and accessible</li> <li>Meet the ambulance on its arrival and direct EMS to the injured player</li> </ul>

Please report all injuries on the Ringette BC website at [ringettebc.ca](http://ringettebc.ca)

Developed on Feb 27, 2020  
Updated on October 21, 2021



# EMERGENCY ACTION PLAN for Prince George Arenas

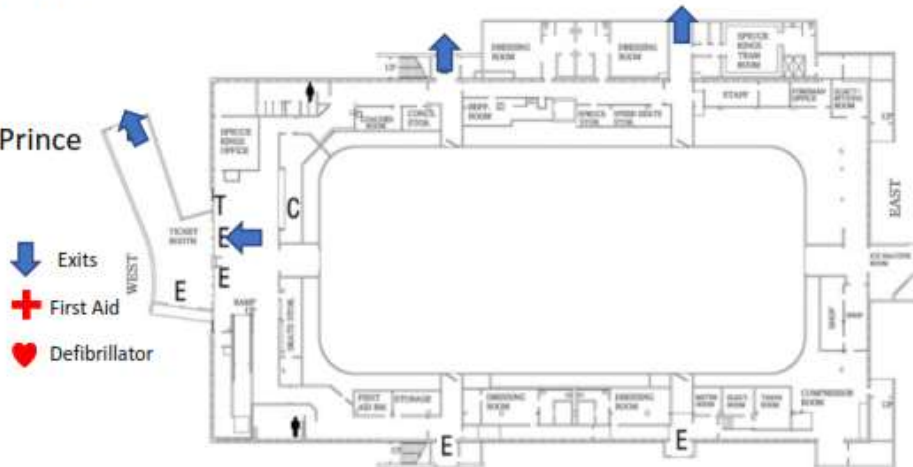


PGRA President, Gina Layte Liston  
Cell: (250) 614-8259  
Email: president@pgringette.ca

## KOPAR MEMORIAL ARENA (COLISEUM)

888 Dominion Street Prince  
George, BC V6L 0A1

Staff Emergency Contact Number: 250-561-7635



**Nearest Hospital:** University Hospital of Northern British Columbia  
1475 Edmonton St, Prince George, BC V2M 1S2  
(250) 565-2000  
Emergency department: Open 24 hours

**Directions to Hospital:** Head west on Patricia Blvd toward Dominion Street (550 m)  
Continue onto 15<sup>th</sup> Avenue (650 m)  
Turn right onto Edmonton St (79 m)  
Turn left into Hospital (52 m)

**Optional Walk in Clinics:** Nechako Medical Clinic, 1600-15<sup>th</sup> Ave, PG BC V2L 3X3 (in Parkwood Pl)  
*for minor Injuries* (250) 563-3399  
Real Canadian Superstore Clinic, 2155 Ferry Ave, PG BC V2N 5E8  
(250) 960-1327

ROLES		
Designate:	Designate:	Designate:
<b>CHARGE PERSON</b> <ul style="list-style-type: none"> <li>Most qualified person available with training in first aid and emergency response</li> <li>Familiarize yourself with arena emergency equipment</li> <li>Take control of emergency situation until medical personnel arrive</li> <li>Assess injury status of player</li> </ul>	<b>CALL PERSON</b> <ul style="list-style-type: none"> <li>Makes call when emergency assistance required (tests their cell phone in the facility to ensure it will work)</li> <li>Know location of alternate phones in the facility being played in – have change or a phone card if necessary</li> <li>Ideally attend all games and not involved on the bench</li> <li>Has a diagram displaying specific directions and best route to the arena facility</li> </ul>	<b>CONTROL PERSON</b> <ul style="list-style-type: none"> <li>Pre-determine the location of the AED and other emergency equipment in the facility</li> <li>Retrieving the AED and/or first aid kit and bringing to the injured player if requested</li> <li>Seek highly-trained medical personnel in the facility if requested by the charge person</li> <li>Ensure teammates, other participants and spectators are not in the way of the charge person</li> <li>Advise opponents, on-ice officials, arena staff and parents of the steps being taken</li> <li>Ensure the quickest and best route for the ambulance crew to the ice surface is clear and accessible</li> <li>Meet the ambulance on its arrival and direct EMS to the injured player</li> </ul>

Please report all injuries using the Ringette BC Incident Report

# KOPAR MEMORIAL (COLISEUM) ARENA

888 Dominion Street

Prince George, BC V6L 0A1

Fire Emergency (Fire truck is arriving on site)-

- Coliseum staff are aware of the fire truck arriving and will meet them outside as they come on site.
- The east end of building at the Zamboni roll up door facing City Hall (blue dot on attached map), but it will depend on what is happening at the facility and where the incident is taking place.

Medical Emergency (Ambulance is arriving on site)

- On Ice Surface
  - User group calls 911 and provides location of injured person
  - User group alerts the Kopar Arena (Coliseum) staff (Phone number: 250-561-7635)
  - User group meets the ambulance paramedics as they arrive on site and determine the best access to where the injured player is. Similar to the fire department, at the east end of the building at the Zamboni roll up door facing City Hall is the largest space for the ambulance to deploy from and access the ice from that area.
- Bleachers, front lobby or in a changeroom
  - User group calls 911 and provides location of injured person
  - User group meets the ambulance staff as they arrive on site and determine the best access to where the injured player/spectator is. Similar to the fire department, at the east end of the building at the Zamboni roll up door facing City Hall is the largest space for the ambulance to deploy from and access the ice from that area.



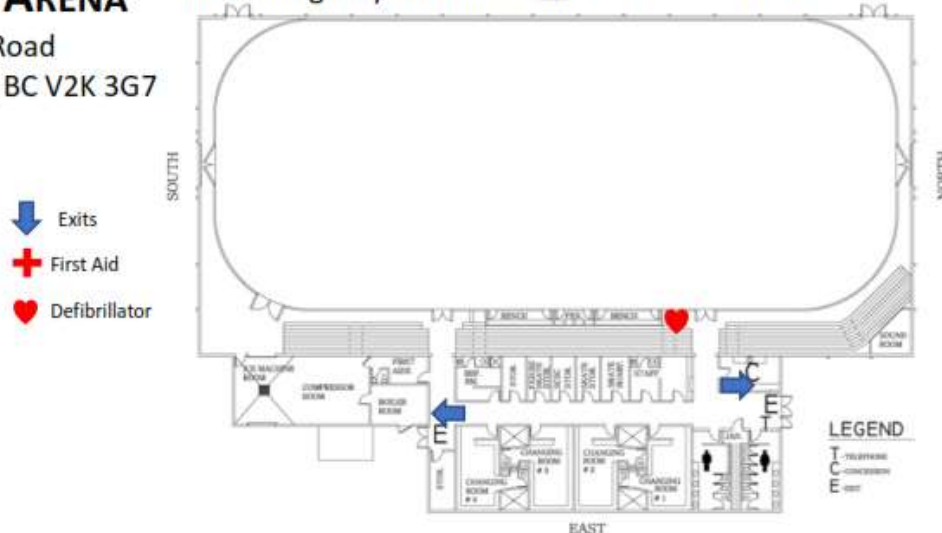


## EMERGENCY ACTION PLAN



**ELKSENTRE ARENA**  
 4833 Heather Road  
 Prince George, BC V2K 3G7

Staff Emergency Contact Number: 250-561-7638



**Nearest Hospital:** University Hospital of Northern British Columbia  
 1475 Edmonton St, Prince George, BC V2M 1S2  
 (250) 565-2000  
 Emergency department: Open 24 hours

**Directions to Hospital:** Head west on Heather Rd toward Austin Rd W (400 m)  
 Take Foothills Blvd and N Nechako Rd to Edmonton St (12.5 km)  
 Continue on Edmonton St to your destination (150 m)

**Optional Walk in Clinics:** Nechako Medical Clinic, 1600-15<sup>th</sup> Ave, PG BC V2L 3X3 (in Parkwood Pl)  
 (250) 563-3399  
 Real Canadian Superstore Clinic, 2155 Ferry Ave, PG BC V2N 5E8  
 (250) 960-1327

ROLES		
Designate:	Designate:	Designate:
<b>CHARGE PERSON</b> <ul style="list-style-type: none"> <li>Most qualified person available with training in first aid and emergency response</li> <li>Familiarize yourself with arena emergency equipment</li> <li>Take control of emergency situation until medical personnel arrive</li> <li>Assess injury status of player</li> </ul>	<b>CALL PERSON</b> <ul style="list-style-type: none"> <li>Makes call when emergency assistance required (tests their cell phone in the facility to ensure it will work)</li> <li>Know location of alternate phones in the facility being played in – have change or a phone card if necessary</li> <li>Ideally attend all games and not involved on the bench</li> <li>Has a diagram displaying specific directions and best route to the arena facility</li> </ul>	<b>CONTROL PERSON</b> <ul style="list-style-type: none"> <li>Pre-determine the location of the AED and other emergency equipment in the facility</li> <li>Retrieving the AED and/or first aid kit and bringing to the injured player if requested</li> <li>Seek highly-trained medical personnel in the facility if requested by the charge person</li> <li>Ensure teammates, other participants and spectators are not in the way of the charge person</li> <li>Advise opponents, on-ice officials, arena staff and parents of the steps being taken</li> <li>Ensure the quickest and best route for the ambulance crew to the ice surface is clear and accessible</li> <li>Meet the ambulance on its arrival and direct EMS to the injured player</li> </ul>

Please report all injuries on the Ringette BC website at [ringettebc.ca](http://ringettebc.ca)

Developed on Feb 27, 2020  
 Updated on October 21, 2021