

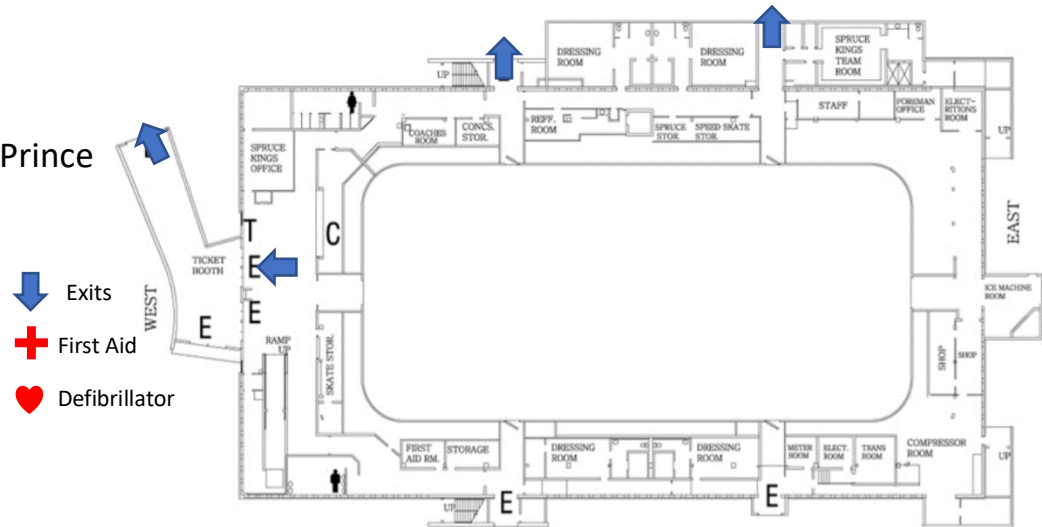
EMERGENCY ACTION PLAN for Prince George Arenas



KOPAR MEMORIAL ARENA (COLISEUM)

888 Dominion Street Prince
 George, BC V6L 0A1

Staff Emergency Contact Number: 250-561-7635



Nearest Hospital: University Hospital of Northern British Columbia
 1475 Edmonton St, Prince George, BC V2M 1S2
 (250) 565-2000
 Emergency department: Open 24 hours

Directions to Hospital: Head west on Patricia Blvd toward Dominion Street (550 m)
 Continue onto 15th Avenue (650 m)
 Turn right onto Edmonton St (79 m)
 Turn left into Hospital (52 m)

Optional Walk in Clinics: Nechako Medical Clinic, 1600-15th Ave, PG BC V2L 3X3 (in Parkwood Pl)
 for minor Injuries (250) 563-3399
 Real Canadian Superstore Clinic, 2155 Ferry Ave, PG BC V2N 5E8
 (250) 960-1327

ROLES		
Designate:	Designate:	Designate:
CHARGE PERSON <ul style="list-style-type: none"> Most qualified person available with training in first aid and emergency response Familiarize yourself with arena emergency equipment Take control of emergency situation until medical personnel arrive Assess injury status of player 	CALL PERSON <ul style="list-style-type: none"> Makes call when emergency assistance required (tests their cell phone in the facility to ensure it will work) Know location of alternate phones in the facility being played in – have change or a phone card if necessary Ideally attend all games and not involved on the bench Has a diagram displaying specific directions and best route to the arena facility 	CONTROL PERSON <ul style="list-style-type: none"> Pre-determine the location of the AED and other emergency equipment in the facility Retrieving the AED and/or first aid kit and bringing to the injured player if requested Seek highly-trained medical personnel in the facility if requested by the charge person Ensure teammates, other participants and spectators are not in the way of the charge person Advise opponents, on-ice officials, arena staff and parents of the steps being taken Ensure the quickest and best route for the ambulance crew to the ice surface is clear and accessible Meet the ambulance on its arrival and direct EMS to the injured player

Please report all injuries using the Ringette BC Incident Report

KOPAR MEMORIAL (COLISEUM) ARENA

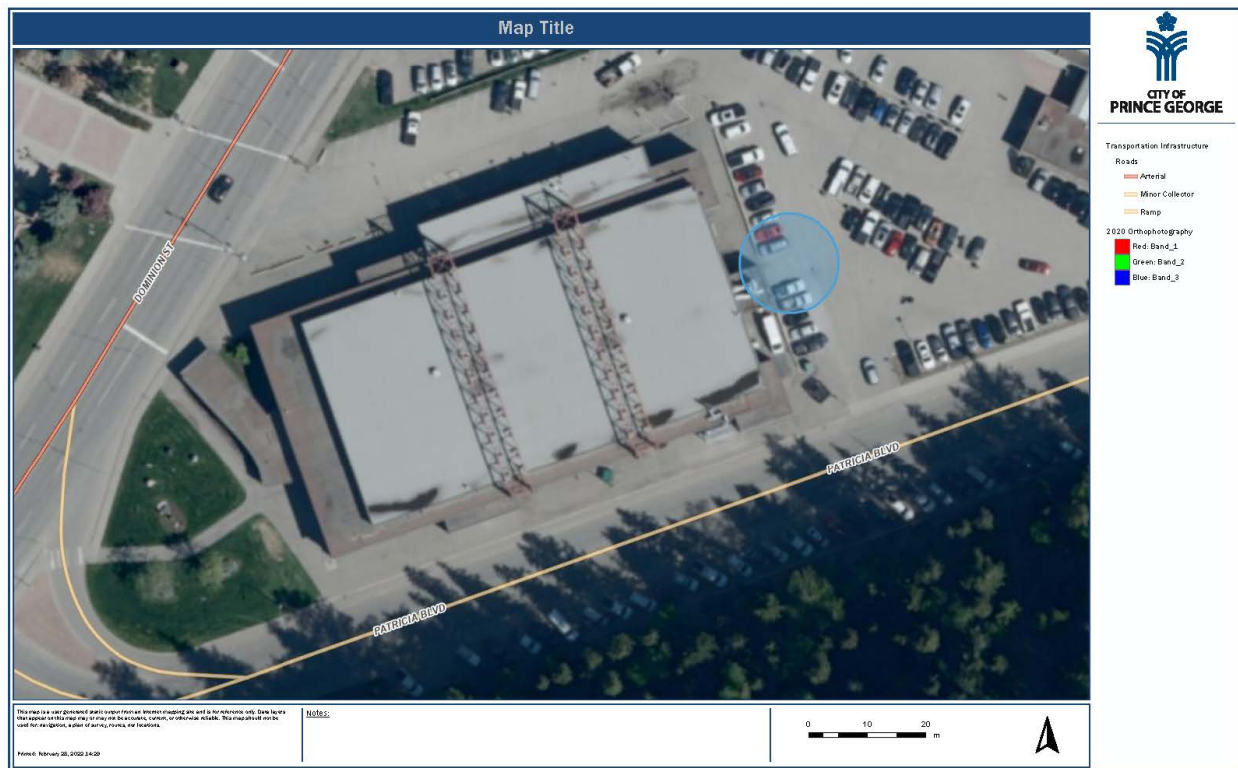
888 Dominion Street
Prince George, BC V6L 0A1

Fire Emergency (Fire truck is arriving on site)-

- Coliseum staff are aware of the fire truck arriving and will meet them outside as they come on site.
- The east end of building at the Zamboni roll up door facing City Hall (blue dot on attached map), but it will depend on what is happening at the facility and where the incident is taking place.

Medical Emergency (Ambulance is arriving on site)

- On Ice Surface
 - User group calls 911 and provides location of injured person
 - User group alerts the Kopar Arena (Coliseum) staff (Phone number: 250-561-7635)
 - User group meets the ambulance paramedics as they arrive on site and determine the best access to where the injured player is. Similar to the fire department, at the east end of the building at the Zamboni roll up door facing City Hall is the largest space for the ambulance to deploy from and access the ice from that area.
- Bleachers, front lobby or in a changeroom
 - User group calls 911 and provides location of injured person
 - User group meets the ambulance staff as they arrive on site and determine the best access to where the injured player/spectator is. Similar to the fire department, at the east end of the building at the Zamboni roll up door facing City Hall is the largest space for the ambulance to deploy from and access the ice from that area.



EMERGENCY ACTION PLAN



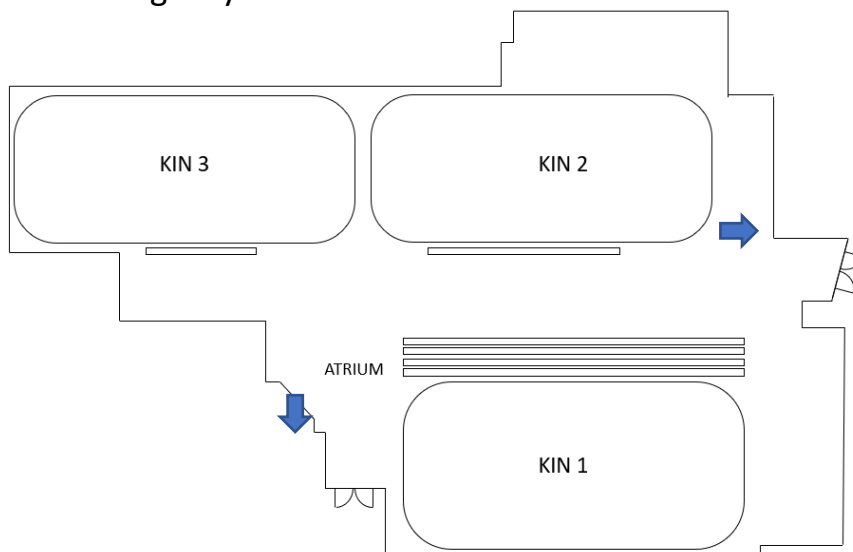
KIN CENTRE ARENAS

Staff Emergency Contact Number: 250-561-7777

KIN 1, KIN 2, KIN 3

2187 Ospika Boulevard
 Prince George, BC V2N 6Z1

-  Exits
-  First Aid
-  Defibrillator



Nearest Hospital: University Hospital of Northern British Columbia
 1475 Edmonton St, Prince George, BC V2M 1S2
 (250) 565-2000
 Emergency department: Open 24 hours

Directions to Hospital: Head east on Keller St toward Ospika Blvd S (280 m)
 Turn left onto Ospika Blvd S (600 m)
 Turn right at the 2nd cross street onto 15th Avenue (2.2 km)
 Turn left onto Edmonton St (94 m)
 Turn left to Hospital (52 m)

Optional Walk in Clinics: Nechako Medical Clinic, 1600-15th Ave, PG BC V2L 3X3 (in Parkwood Pl)
for minor Injuries (250) 563-3399
 Real Canadian Superstore Clinic, 2155 Ferry Ave, PG BC V2N 5E8
 (250) 960-1327

ROLES		
Designate:	Designate:	Designate:
CHARGE PERSON <ul style="list-style-type: none"> Most qualified person available with training in first aid and emergency response Familiarize yourself with arena emergency equipment Take control of emergency situation until medical personnel arrive Assess injury status of player 	CALL PERSON <ul style="list-style-type: none"> Makes call when emergency assistance required (tests their cell phone in the facility to ensure it will work) Know location of alternate phones in the facility being played in – have change or a phone card if necessary Ideally at attend all games and not involved on the bench Has a diagram displaying specific directions and best route to the arena facility 	CONTROL PERSON <ul style="list-style-type: none"> Pre-determine the location of the AED and other emergency equipment in the facility Retrieving the AED and/or first aid kit and bringing to the injured player if requested Seek highly-trained medical personnel in the facility if requested by the charge person Ensure teammates, other participants and spectators are not in the way of the charge person Advise opponents, on-ice officials, arena staff and parents of the steps being taken Ensure the quickest and best route for the ambulance crew to the ice surface is clear and accessible Meet the ambulance on its arrival and direct EMS to the injured player

EMERGENCY ACTION PLAN

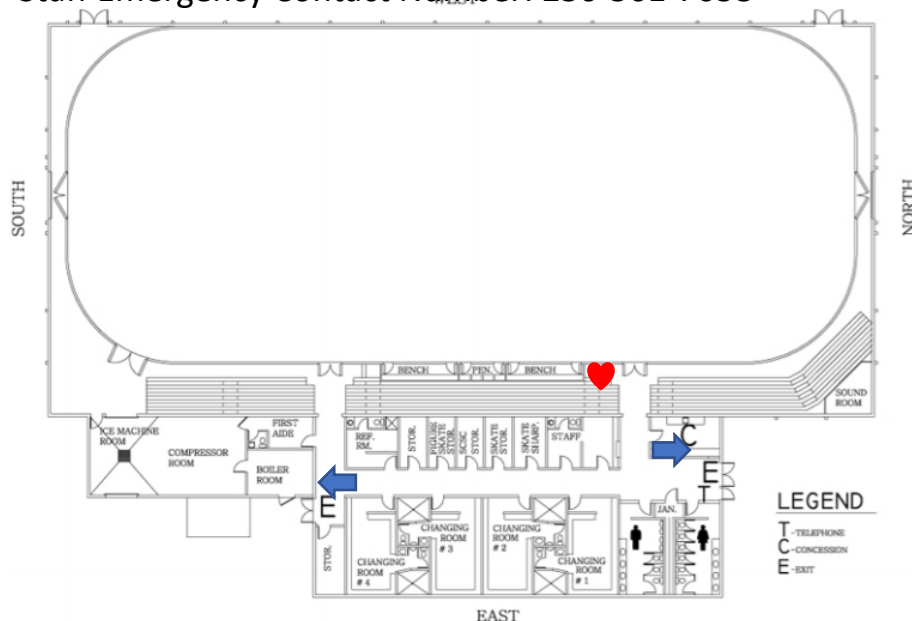


ELKSENTRE ARENA

4833 Heather Road
 Prince George, BC V2K 3G7

Staff Emergency Contact Number: 250-561-7638

- Exits
- First Aid
- Defibrillator



Nearest Hospital: University Hospital of Northern British Columbia
 1475 Edmonton St, Prince George, BC V2M 1S2
 (250) 565-2000
 Emergency department: Open 24 hours

Directions to Hospital: Head west on Heather Rd toward Austin Rd W (400 m)
 Take Foothills Blvd and N Nechako Rd to Edmonton St (12.5 km)
 Continue on Edmonton St to your destination (150 m)

Optional Walk in Clinics: Nechako Medical Clinic, 1600-15th Ave, PG BC V2L 3X3 (in Parkwood Pl)
 (250) 563-3399
 Real Canadian Superstore Clinic, 2155 Ferry Ave, PG BC V2N 5E8
 (250) 960-1327
for minor injuries

ROLES		
Designate:	Designate:	Designate:
CHARGE PERSON <ul style="list-style-type: none"> Most qualified person available with training in first aid and emergency response Familiarize yourself with arena emergency equipment Take control of emergency situation until medical personnel arrive Assess injury status of player 	CALL PERSON <ul style="list-style-type: none"> Makes call when emergency assistance required (tests their cell phone in the facility to ensure it will work) Know location of alternate phones in the facility being played in – have change or a phone card if necessary Ideally attend all games and not involved on the bench Has a diagram displaying specific directions and best route to the arena facility 	CONTROL PERSON <ul style="list-style-type: none"> Pre-determine the location of the AED and other emergency equipment in the facility Retrieving the AED and/or first aid kit and bringing to the injured player if requested Seek highly-trained medical personnel in the facility if requested by the charge person Ensure teammates, other participants and spectators are not in the way of the charge person Advise opponents, on-ice officials, arena staff and parents of the steps being taken Ensure the quickest and best route for the ambulance crew to the ice surface is clear and accessible Meet the ambulance on its arrival and direct EMS to the injured player

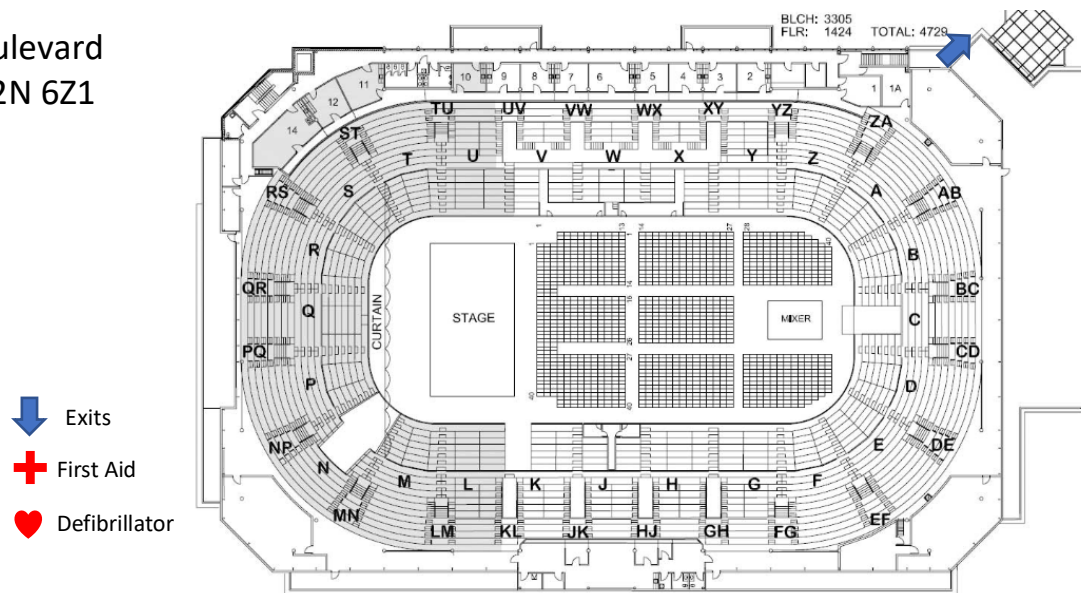
EMERGENCY ACTION PLAN



CN CENTRE

100-2187 Ospika Boulevard
 Prince George, BC V2N 6Z1

Staff Emergency Contact Number: 250-561-7762



Nearest Hospital: University Hospital of Northern British Columbia
 1475 Edmonton St, Prince George, BC V2M 1S2
 (250) 565-2000
 Emergency department: Open 24 hours

Directions to Hospital: Head east on Keller St toward Ospika Blvd S (280 m)
 Turn left onto Ospika Blvd S (600 m)
 Turn right at the 2nd cross street onto 15th Avenue (2.2 km)
 Turn left onto Edmonton St (94 m)
 Turn left to Hospital (52 m)

Optional Walk in Clinics: Nechako Medical Clinic, 1600-15th Ave, PG BC V2L 3X3 (in Parkwood Pl)
 (250) 563-3399
 Real Canadian Superstore Clinic, 2155 Ferry Ave, PG BC V2N 5E8
 (250) 960-1327

ROLES

Designate:	Designate:	Designate:
CHARGE PERSON <ul style="list-style-type: none"> Most qualified person available with training in first aid and emergency response Familiarize yourself with arena emergency equipment Take control of emergency situation until medical personnel arrive Assess injury status of player 	CALL PERSON <ul style="list-style-type: none"> Makes call when emergency assistance required (tests their cell phone in the facility to ensure it will work) Know location of alternate phones in the facility being played in – have change or a phone card if necessary Ideally attend all games and not involved on the bench Has a diagram displaying specific directions and best route to the arena facility 	CONTROL PERSON <ul style="list-style-type: none"> Pre-determine the location of the AED and other emergency equipment in the facility Retrieving the AED and/or first aid kit and bringing to the injured player if requested Seek highly-trained medical personnel in the facility if requested by the charge person Ensure teammates, other participants and spectators are not in the way of the charge person Advise opponents, on-ice officials, arena staff and parents of the steps being taken Ensure the quickest and best route for the ambulance crew to the ice surface is clear and accessible Meet the ambulance on its arrival and direct EMS to the injured player