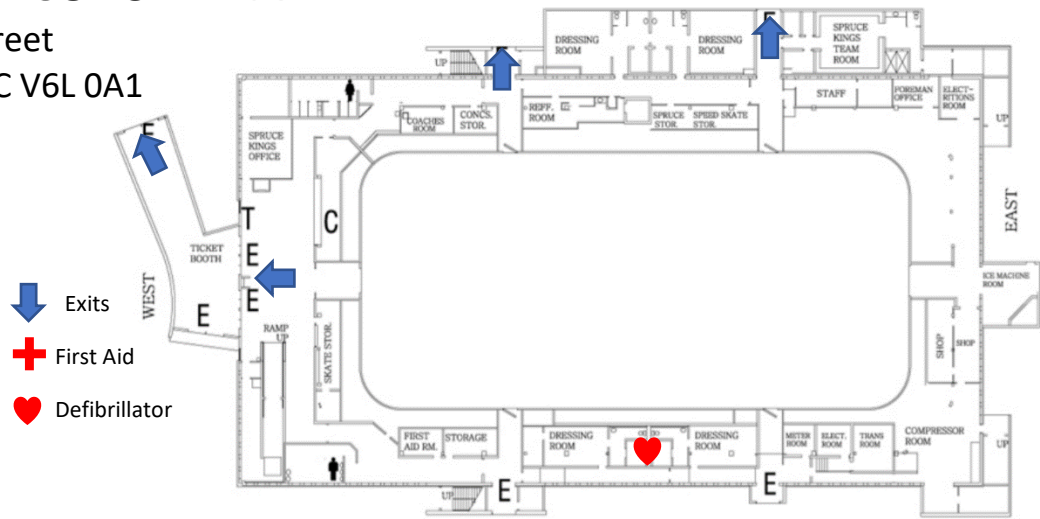




ROLLING MIX CONCRETE ARENA

888 Dominion Street
 Prince George, BC V6L 0A1



Nearest Hospital: University Hospital of Northern British Columbia
 1475 Edmonton St, Prince George, BC V2M 1S2
 (250) 565-2000
 Emergency department: Open 24 hours

Directions to Hospital: Head west on Patricia Blvd toward Dominion Street (550 m)
 Continue onto 15th Avenue (650 m)
 Turn right onto Edmonton St (79 m)
 Turn left into Hospital (52 m)

Optional Walk in Clinics: Nechako Medical Clinic, 1600-15th Ave, PG BC V2L 3X3 (in Parkwood Pl)
 for minor Injuries (250) 563-3399
 Real Canadian Superstore Clinic, 2155 Ferry Ave, PG BC V2N 5E8
 (250) 960-1327

ROLES

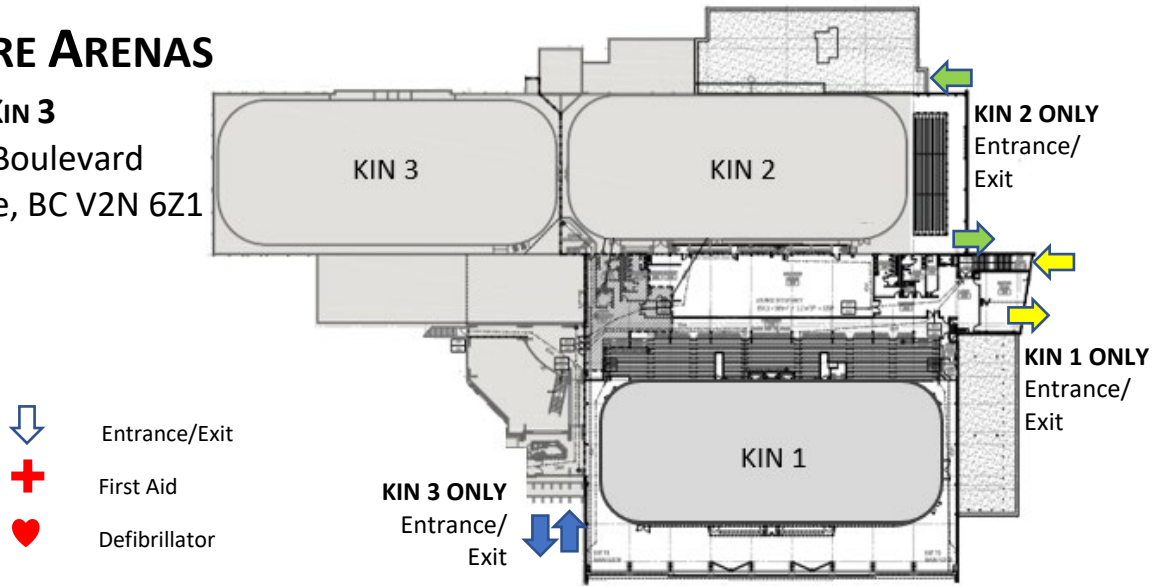
Designate: Contact #:	Designate: Contact #:	Designate: Contact #:
<p>CHARGE PERSON</p> <ul style="list-style-type: none"> Most qualified person available with training in first aid and emergency response Familiarize yourself with arena emergency equipment Take control of emergency situation until medical personnel arrive Assess injury status of player 	<p>CALL PERSON</p> <ul style="list-style-type: none"> Makes call when emergency assistance required (tests their cell phone in the facility to ensure it will work) Know location of alternate phones in the facility being played in – have change or a phone card if necessary Ideally attend all games and not involved on the bench Has a diagram displaying specific directions and best route to the arena facility 	<p>CONTROL PERSON</p> <ul style="list-style-type: none"> Pre-determine the location of the AED and other emergency equipment in the facility Retrieving the AED and/or first aid kit and bringing to the injured player if requested Seek highly-trained medical personnel in the facility if requested by the charge person Ensure teammates, other participants and spectators are not in the way of the charge person Advise opponents, on-ice officials, arena staff and parents of the steps being taken Ensure the quickest and best route for the ambulance crew to the ice surface is clear and accessible Meet the ambulance on its arrival and direct EMS to the injured player



KIN CENTRE ARENAS

KIN 1, KIN 2, KIN 3

2187 Ospika Boulevard
 Prince George, BC V2N 6Z1



Nearest Hospital: University Hospital of Northern British Columbia
 1475 Edmonton St, Prince George, BC V2M 1S2
 (250) 565-2000
 Emergency department: Open 24 hours

Directions to Hospital: Head east on Keller St toward Ospika Blvd S (280 m)
 Turn left onto Ospika Blvd S (600 m)
 Turn right at the 2nd cross street onto 15th Avenue (2.2 km)
 Turn left onto Edmonton St (94 m)
 Turn left to Hospital (52 m)

Optional Walk in Clinics: Nechako Medical Clinic, 1600-15th Ave, PG BC V2L 3X3 (in Parkwood Pl)
 for minor Injuries (250) 563-3399
 Real Canadian Superstore Clinic, 2155 Ferry Ave, PG BC V2N 5E8
 (250) 960-1327

ROLES

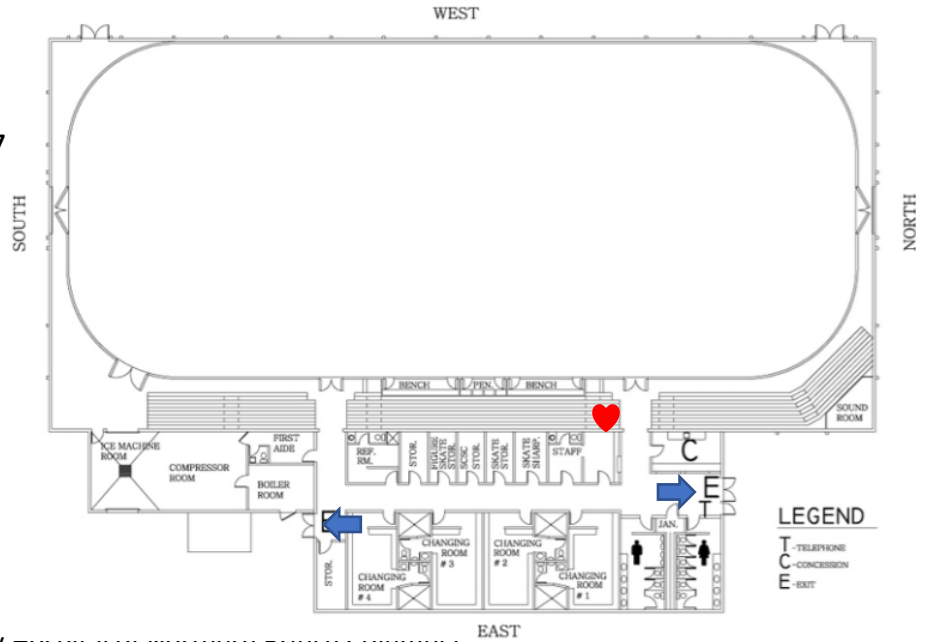
Designate: Contact #:	Designate: Contact #:	Designate: Contact #:
CHARGE PERSON <ul style="list-style-type: none"> Most qualified person available with training in first aid and emergency response Familiarize yourself with arena emergency equipment Take control of emergency situation until medical personnel arrive Assess injury status of player 	CALL PERSON <ul style="list-style-type: none"> Makes call when emergency assistance required (tests their cell phone in the facility to ensure it will work) Know location of alternate phones in the facility being played in – have change or a phone card if necessary Ideally at attend all games and not involved on the bench Has a diagram displaying specific directions and best route to the arena facility 	CONTROL PERSON <ul style="list-style-type: none"> Pre-determine the location of the AED and other emergency equipment in the facility Retrieving the AED and/or first aid kit and bringing to the injured player if requested Seek highly-trained medical personnel in the facility if requested by the charge person Ensure teammates, other participants and spectators are not in the way of the charge person Advise opponents, on-ice officials, arena staff and parents of the steps being taken Ensure the quickest and best route for the ambulance crew to the ice surface is clear and accessible Meet the ambulance on its arrival and direct EMS to the injured player



ELKSENTRE ARENA

4833 Heather Road
 Prince George, BC V2K 3G7

- Exits
- First Aid
- Defibrillator



Nearest Hospital: University Hospital of Northern British Columbia
 1475 Edmonton St, Prince George, BC V2M 1S2
 (250) 565-2000
 Emergency department: Open 24 hours

Directions to Hospital: Head west on Heather Rd toward Austin Rd W (400 m)
 Take Foothills Blvd and N Nechako Rd to Edmonton St (12.5 km)
 Continue on Edmonton St to your destination (150 m)

Optional Walk in Clinics: Nechako Medical Clinic, 1600-15th Ave, PG BC V2L 3X3 (in Parkwood Pl)
 for minor Injuries (250) 563-3399
 Real Canadian Superstore Clinic, 2155 Ferry Ave, PG BC V2N 5E8
 (250) 960-1327

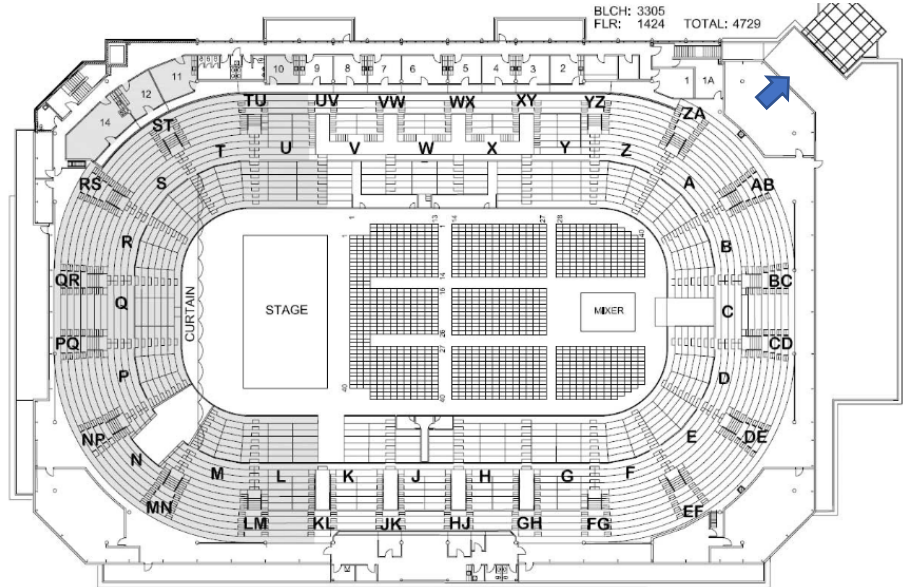
ROLES

Designate: Contact #:	Designate: Contact #:	Designate: Contact #:
CHARGE PERSON <ul style="list-style-type: none"> Most qualified person available with training in first aid and emergency response Familiarize yourself with arena emergency equipment Take control of emergency situation until medical personnel arrive Assess injury status of player 	CALL PERSON <ul style="list-style-type: none"> Makes call when emergency assistance required (tests their cell phone in the facility to ensure it will work) Know location of alternate phones in the facility being played in – have change or a phone card if necessary Ideally attend all games and not involved on the bench Has a diagram displaying specific directions and best route to the arena facility 	CONTROL PERSON <ul style="list-style-type: none"> Pre-determine the location of the AED and other emergency equipment in the facility Retrieving the AED and/or first aid kit and bringing to the injured player if requested Seek highly-trained medical personnel in the facility if requested by the charge person Ensure teammates, other participants and spectators are not in the way of the charge person Advise opponents, on-ice officials, arena staff and parents of the steps being taken Ensure the quickest and best route for the ambulance crew to the ice surface is clear and accessible Meet the ambulance on its arrival and direct EMS to the injured player



CN CENTRE

100-2187 Ospika Boulevard
 Prince George, BC V2N 6Z1



- Exits
- First Aid
- Defibrillator

Nearest Hospital: University Hospital of Northern British Columbia
 1475 Edmonton St, Prince George, BC V2M 1S2
 (250) 565-2000
 Emergency department: Open 24 hours

Directions to Hospital: Head east on Keller St toward Ospika Blvd S (280 m)
 Turn left onto Ospika Blvd S (600 m)
 Turn right at the 2nd cross street onto 15th Avenue (2.2 km)
 Turn left onto Edmonton St (94 m)
 Turn left to Hospital (52 m)

Optional Walk in Clinics: Nechako Medical Clinic, 1600-15th Ave, PG BC V2L 3X3 (in Parkwood PI)
 for minor Injuries (250) 563-3399
 Real Canadian Superstore Clinic, 2155 Ferry Ave, PG BC V2N 5E8
 (250) 960-1327

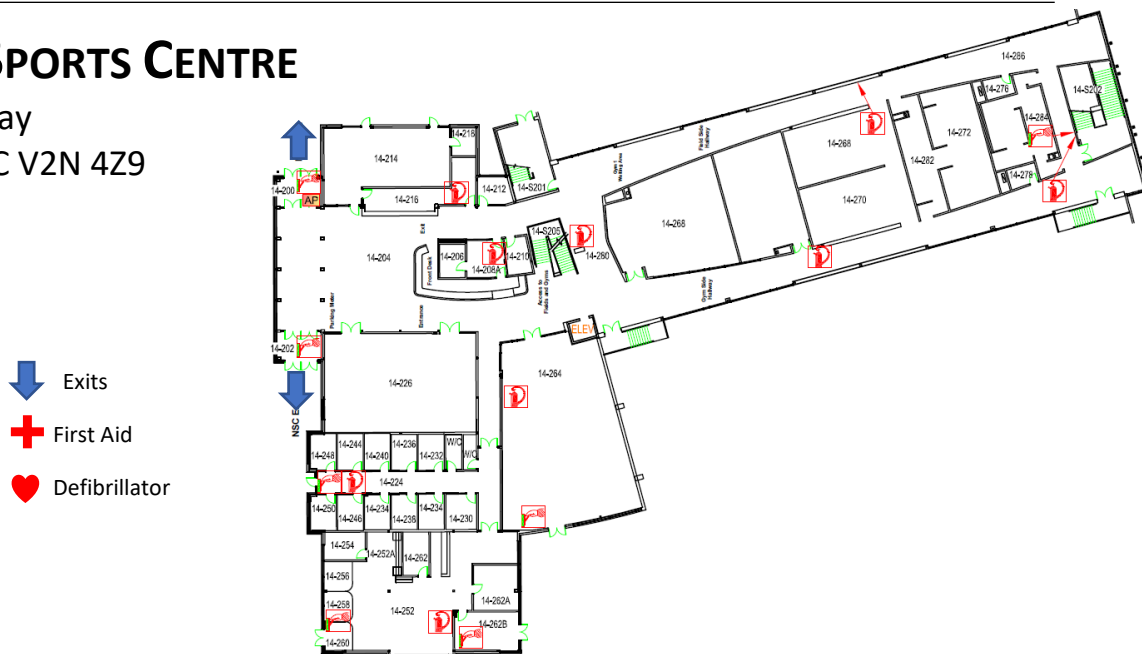
ROLES

Designate: Contact #:	Designate: Contact #:	Designate: Contact #:
CHARGE PERSON <ul style="list-style-type: none"> Most qualified person available with training in first aid and emergency response Familiarize yourself with arena emergency equipment Take control of emergency situation until medical personnel arrive Assess injury status of player 	CALL PERSON <ul style="list-style-type: none"> Makes call when emergency assistance required (tests their cell phone in the facility to ensure it will work) Know location of alternate phones in the facility being played in – have change or a phone card if necessary Ideally attend all games and not involved on the bench Has a diagram displaying specific directions and best route to the arena facility 	CONTROL PERSON <ul style="list-style-type: none"> Pre-determine the location of the AED and other emergency equipment in the facility Retrieving the AED and/or first aid kit and bringing to the injured player if requested Seek highly-trained medical personnel in the facility if requested by the charge person Ensure teammates, other participants and spectators are not in the way of the charge person Advise opponents, on-ice officials, arena staff and parents of the steps being taken Ensure the quickest and best route for the ambulance crew to the ice surface is clear and accessible Meet the ambulance on its arrival and direct EMS to the injured player



NORTHERN SPORTS CENTRE

333 University Way
 Prince George, BC V2N 4Z9



- Exits
- First Aid
- Defibrillator

Nearest Hospital: University Hospital of Northern British Columbia
 1475 Edmonton St, Prince George, BC V2M 1S2
 (250) 565-2000
 Emergency department: Open 24 hours

Directions to Hospital: Turn left onto University Way (3.1 km)
 Continue onto 15th Avenue (3.1 km)
 Turn left onto Edmonton St (94 m)
 Turn left into Hospital (52 m)

Optional Walk in Clinics: Nechako Medical Clinic, 1600-15th Ave, PG BC V2L 3X3 (in Parkwood Pl)
for minor Injuries (250) 563-3399
 Real Canadian Superstore Clinic, 2155 Ferry Ave, PG BC V2N 5E8
 (250) 960-1327

ROLES

Designate: Contact #:	Designate: Contact #:	Designate: Contact #:
CHARGE PERSON <ul style="list-style-type: none"> Most qualified person available with training in first aid and emergency response Familiarize yourself with arena emergency equipment Take control of emergency situation until medical personnel arrive Assess injury status of player 	CALL PERSON <ul style="list-style-type: none"> Makes call when emergency assistance required (tests their cell phone in the facility to ensure it will work) Know location of alternate phones in the facility being played in – have change or a phone card if necessary Ideally at attend all games and not involved on the bench Has a diagram displaying specific directions and best route to the arena facility 	CONTROL PERSON <ul style="list-style-type: none"> Pre-determine the location of the AED and other emergency equipment in the facility Retrieving the AED and/or first aid kit and bringing to the injured player if requested Seek highly-trained medical personnel in the facility if requested by the charge person Ensure teammates, other participants and spectators are not in the way of the charge person Advise opponents, on-ice officials, arena staff and parents of the steps being taken Ensure the quickest and best route for the ambulance crew to the ice surface is clear and accessible Meet the ambulance on its arrival and direct EMS to the injured player